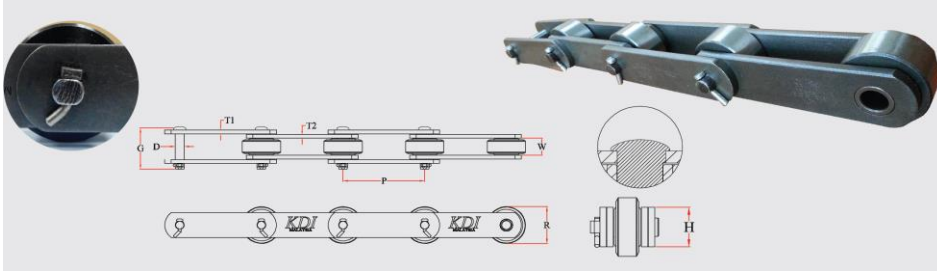


6" SOLID T PIN TYPE



Chain No.	Pitch P	Roller R	Pin D	Inner width W	Total width G	Plate			Maximum Load Lbs	Weight kg/f
						Height H	Thickness T1	T2		
KD604-WR	152.4	50.8	14.5	30.0	70.0	38.1	6.5	6.5	40,000	2.3
KD5289-WR	152.4	66.7	22.1	25.4	72.0	50.8	6.4	6.4	59,500	3.3
KD5289-EX-WR	152.4	66.7	22.1	25.4	72.0	55.0	6.4	8.0	86,400	4.0
KD5289-EXL-WR	152.4	66.7	22.1	25.4	80.0	55.0	8.0	10.0	100,000	4.5
KD9060-WR	152.4	69.8	19.0	38.1	96.0	50.8	9.5	9.5	110,000	5.3
KD5305-WR	160.0	69.8	17.5	38.1	82.0	50.8	6.4	6.4	90,000	4.5
668-WR	152.4	66.7	26.9	25.4	72.0	52.8	6.0	8.0	74,000	3.6

*mm

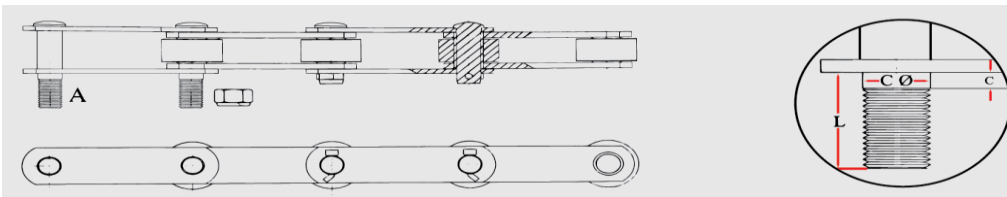
EXTENDED TYPE



Chain No.	Pitch P	Roller R	Pin D	Inner width W	Total width G	Pin Length L	Nut N	Extended Pin	Protect pad	Weight kg/f
KD5289-EX-6EP-WR	152.4	66.7	22.1	25.4	105.0	45.0	M20	6 links	-	4.2
KD5289-EXL-6EP-WR	152.4	66.7	22.1	25.4	113.0	45.0	M20	6 links	-	4.8

*mm

EXTENDED TYPE



Chain No.	Pitch P	Roller R	Pin D	Inner width W	Total width G	Pin Length L	Nut N	Step C	Dia c Ø	Extended Pin	Protect pad	Weight kg/f

*mm